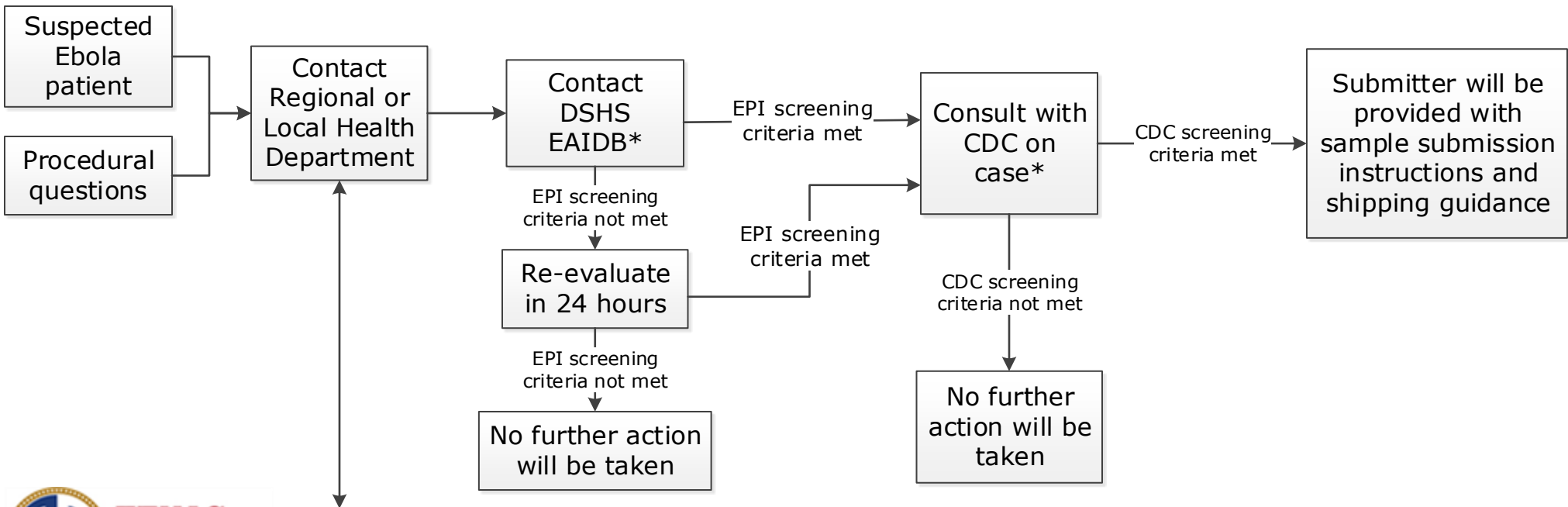


# Texas Ebola Testing Algorithm For Laboratorians

Rev. 5.14.18

- General Ebola Information
- Patient Evaluation
- Case Definition
- Infection Prevention Guidance
- Laboratory Information
- Sample collection and transport
- Shipping
- Symptoms
  - Fever
  - Severe headache
  - Muscle pain
  - Weakness
  - Diarrhea
  - Vomiting
  - Abdominal (stomach) pain
  - Unexplained hemorrhage (bleeding or bruising)

CDC Website <http://www.cdc.gov/vhf/ebola/>



Texas Department of State Health Services

Find your Local Health Department:  
<http://www.dshs.texas.gov/idcu/investigation/conditions/contacts/>



\*DSHS Infectious Disease Medical Officer involved in EPI screening & consult.