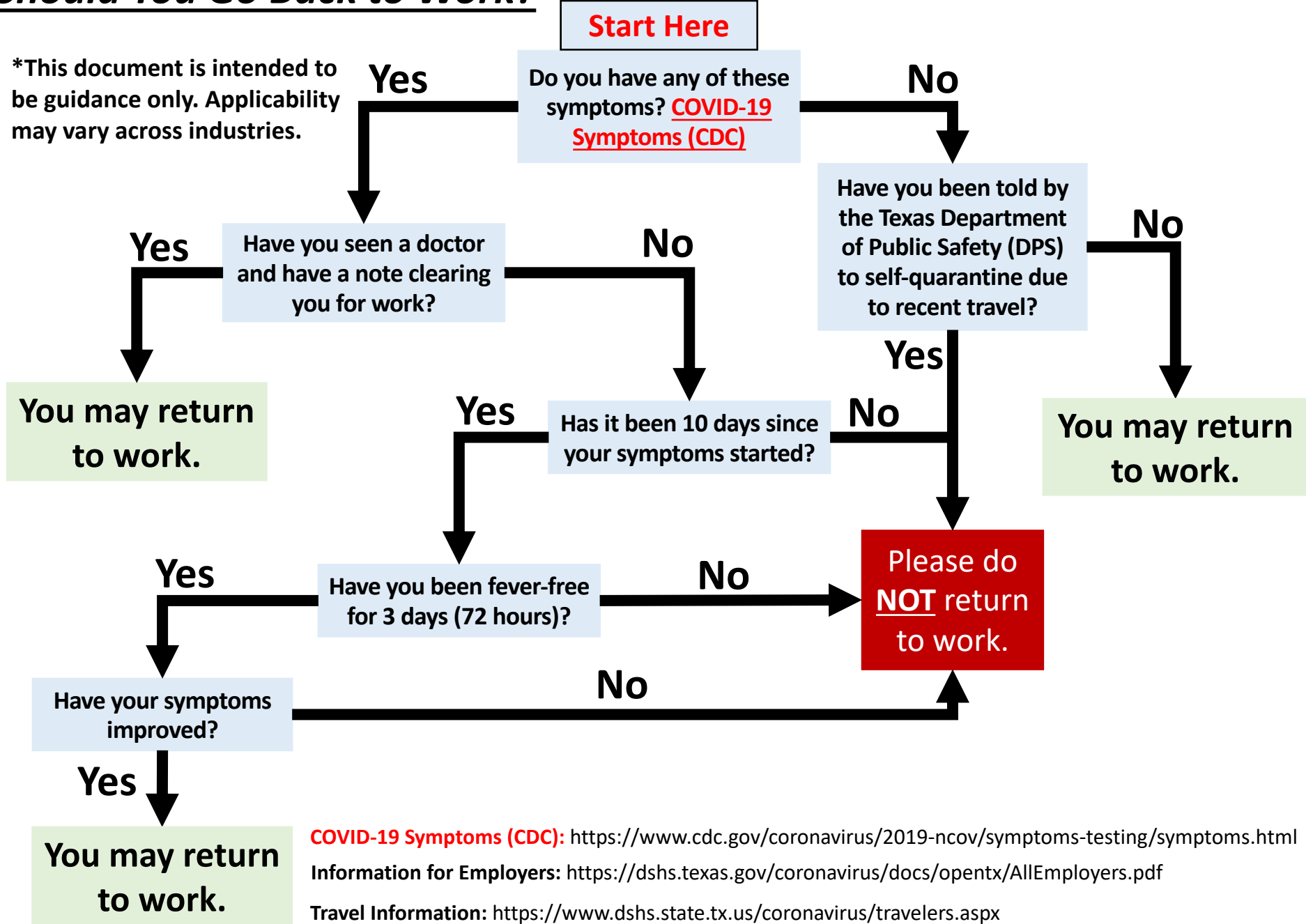


Should You Go Back to Work?

*This document is intended to be guidance only. Applicability may vary across industries.



COVID-19 Symptoms (CDC): <https://www.cdc.gov/coronavirus/2019-ncov/symptoms-testing/symptoms.html>
Information for Employers: <https://dshs.texas.gov/coronavirus/docs/opentx/AllEmployers.pdf>
Travel Information: <https://www.dshs.state.tx.us/coronavirus/travelers.aspx>